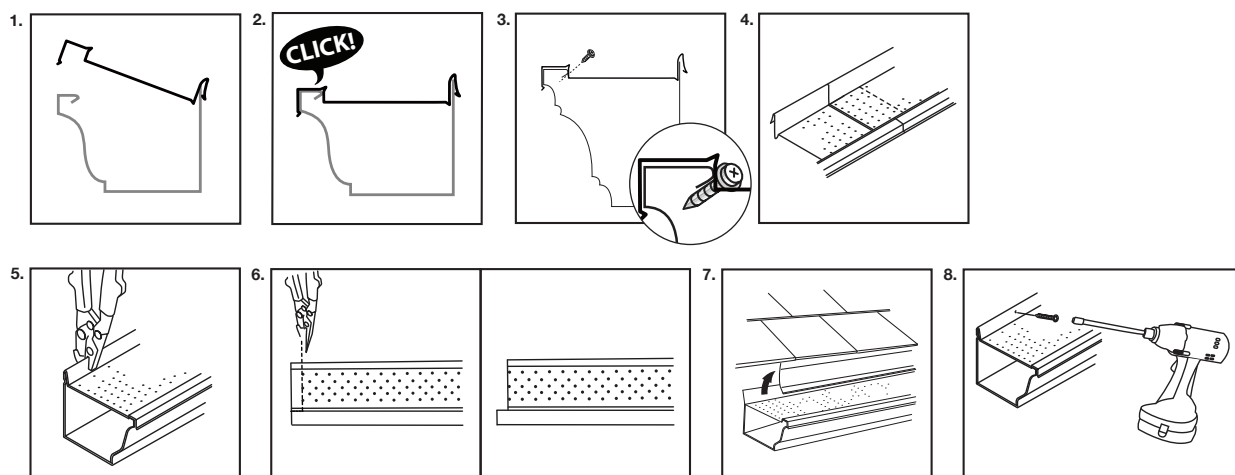


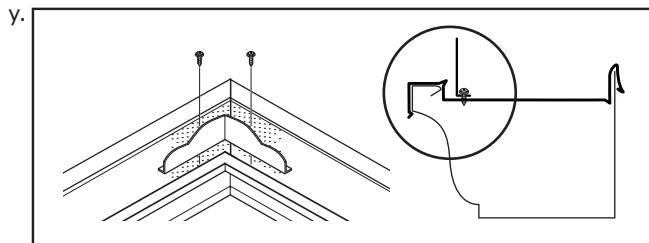
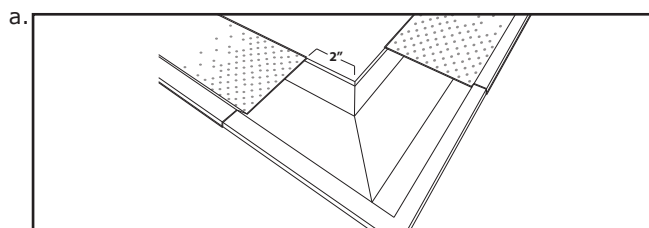
## Installation T-Rex XL M-5800

- 1- Insert the back of the T-Rex on the back of the eavestrough/gutter
- 2- Press down hard on the front of the T-Rex until you hear it « click » into place
- 3- If installed on fascia eavestrough/gutter, add a screw in the Roll-Back to assure it is securely fastened.  
Do not screw into the eavestrough/gutter to allow for expansion
- 4- Make sure that each section of the T-Rex overlaps perfectly
- 5- Using an end cap crimping tool, pinch the back of the T-Rex and the eavestrough/gutter every 3 feet (1 m) to stabilize them
- 6- Near the end-cap, cut the T-Rex as shown in order to prevent water from overflowing
- 7- Insert the back of the eavestrough/gutter under the drip-edge (flashing)
- 8- Screw the back of the T-Rex and the eavestrough/gutter into the fascia board every 24" (60 cm) using the self-sealing screws provided



### CORNER

- a- Stop the sections of the T-Rex 2" (5 cm) from corners, leaving a space to apply the eavestrough/gutter sealing material
- b- Use Alu-Rex prefab corners
- c- Make sure that the prefab corner overlaps the sections of T-Rex on both sides



### IMPORTANT

- y- For inside corners and valleys, install a water diverter directly on the T-Rex
- z- Downspouts 3" x 3" (70 x 70 mm) or 3" x 4" (70 x 119 mm) are required in coniferous areas