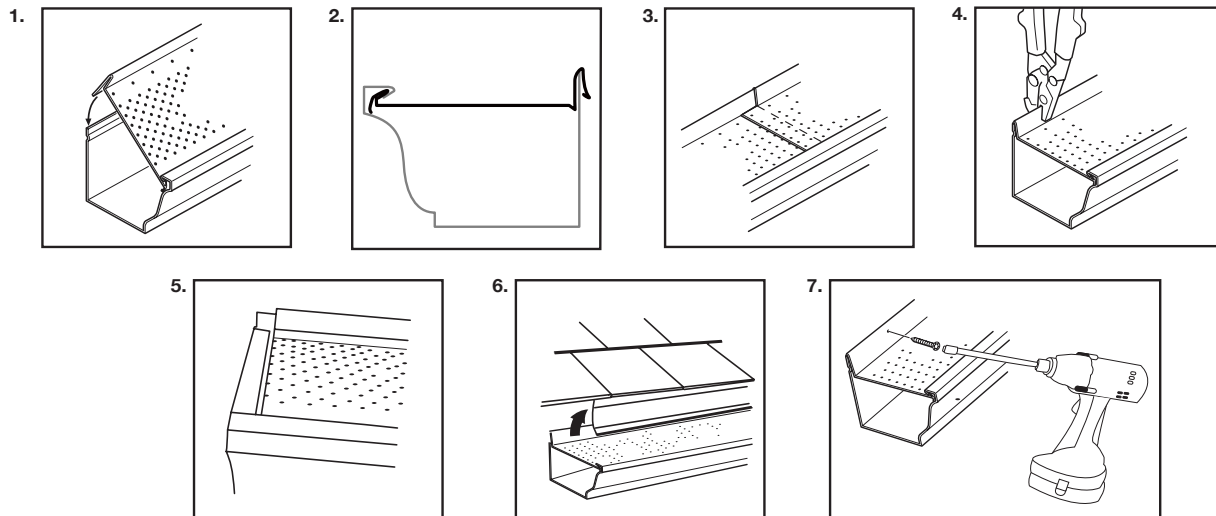


Installation T-Rex M-5200

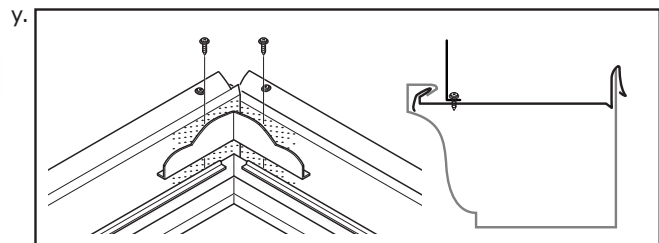
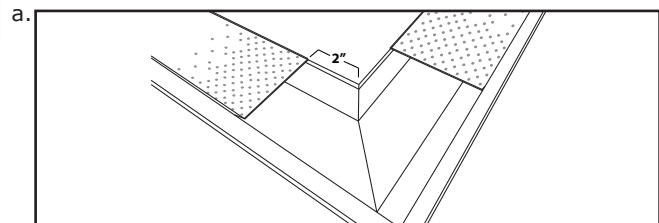
INSTALLATION

- 1- Insert the front of the T-Rex inside the front of the eavestrough
- 2- Insert the back of the T-Rex on the back of the eavestrough
- 3- Make sure that each section of T-Rex overlaps perfectly
- 4- Using an end cap crimping tool, pinch the back of the T-Rex and the eavestrough every 3 feet (1 m) to stabilize them
- 5- Stop the T-Rex sections inside the end cap in order to prevent water from overflowing
- 6- Insert the back of the eavestrough under the drip-edge (flashing)
- 7- Screw the back of the T-Rex and the eavestrough into the fascia board every 24" (60 cm) using the self-sealing screws provided



CORNER

- a- Stop the sections of the T-Rex 2" (5 cm) from corners, leaving a space to apply the eavestrough sealing material.
- b- Use an Alu-Rex prefab corner.
- c- Make sure that the prefab corner overlaps the sections of T-Rex on both sides.



IMPORTANT

- y- For inside corners and valleys, install a water diverter directly on the T-Rex
- z- Downspouts 3" x 3" (70 x 70 mm) or 3" x 4" (70 x 110 mm) are required in conifer areas.